

E-Series

NVR Operation Guide



V1. 9th Dec 2014

V2. 30th Jan 2015

Security Systems Business Division

Panasonic System Networks Co., Ltd.

Panasonic

<NOTICE>

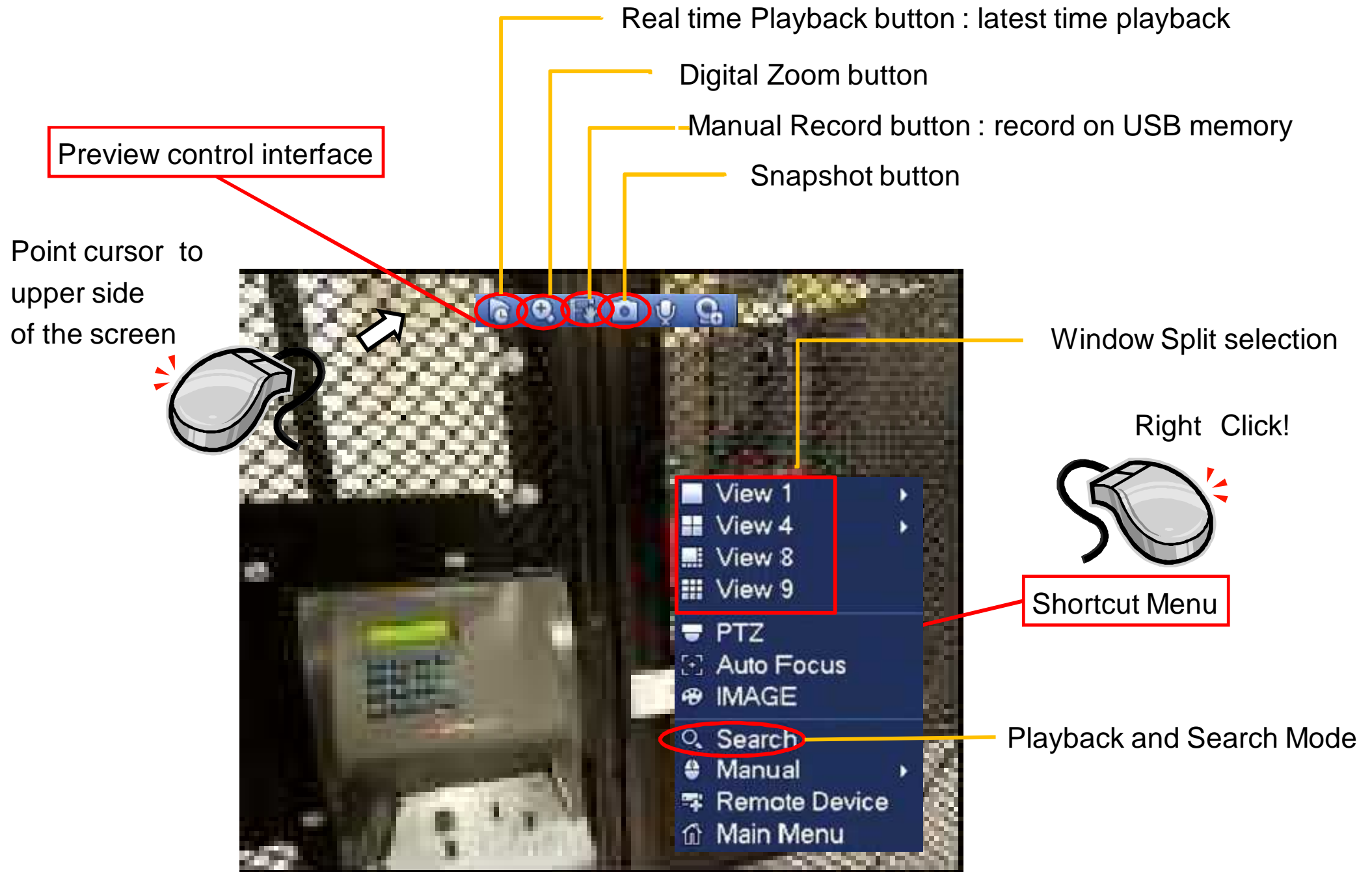
This document is supplementary to the operation manual.

The screens used in this document is taken from K-NL-308K with firmware version3.20.

Depending on the firmware version, the screens may differ from the actual screens.

- 1. Camera Preview(Live View)**
- 2. Playback and Search**
 - **Mark Playback**
 - **File List**
 - **Smart Search**
 - **Accurate Playback by Time**
- 3. Backup**
 - **Snap Shot**
 - **Video Clipping**
 - **File Backup**

Camera Preview (Live View) Interface



Playback and Search Interface

Video / Snapshot selection for playback
 "Record" : Video select
 "PIC" : Snapshot select

Calendar for playback

(Blue Highlighted date)
 There is recorded data
 (Yellow colored date)
 Currently selected for playback

Playback Control Pane
 (Play/Pause/Play Backwards/
 Fast Playback/Rewind/Slow Play)

Window split mode(1/4/9)
 Playback channel selection

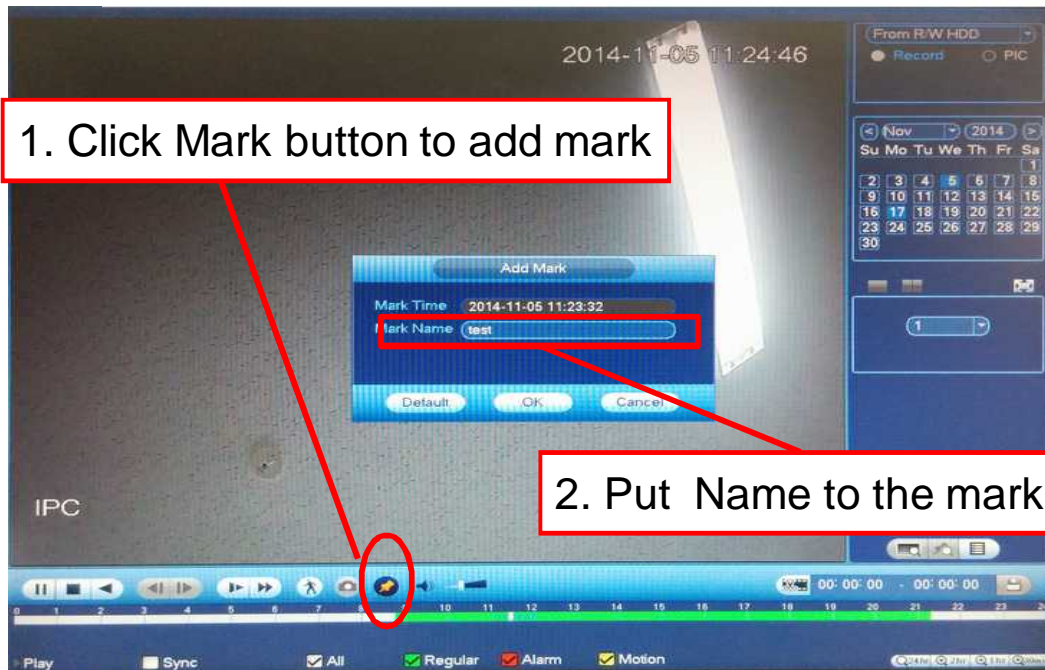
Display file list of the day

Time Line Bar

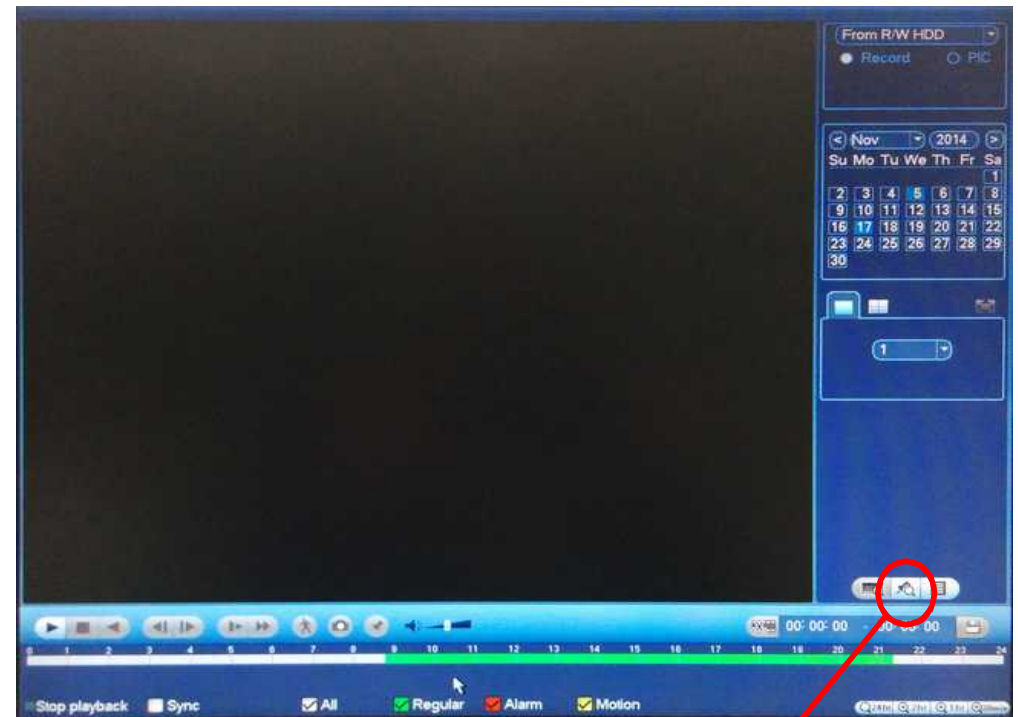
Can change scale of time line



1. Click Mark button to add mark



2. Put Name to the mark



3. Click Mark File list button to see the list of marked files
(Note: this button will work only in single channel mode)

1. Click File List button

2.

- Check Start time to select
- Double Click to playback

3. Click File Lock button after selected a file in the list
Locked files will not be overwritten

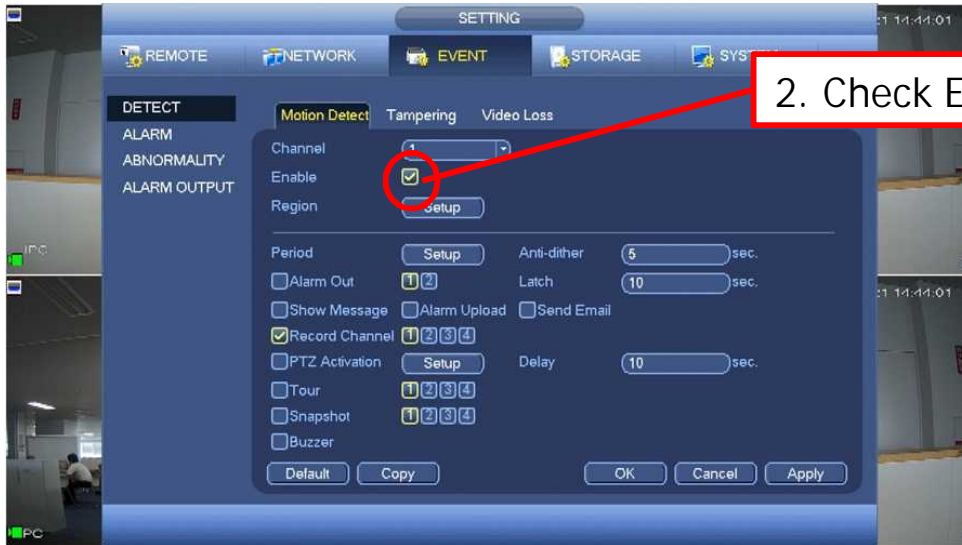
4. Click Search Locked File button to see the list of locked files

[NOTE]
E series NVR stores recorded video as file.

| StartTime | Type |
|--|------|
| 11:02:48 | R |
| <input checked="" type="checkbox"/> 12:00:00 | R |
| 12:32:53 | R |
| 12:36:34 | R |
| 12:36:42 | R |
| 12:40:06 | M |
| 12:46:04 | M |

| Start Time | End Time | Size(KB) |
|-------------------|-------------------|----------|
| 14-09-17 12:00:00 | 14-09-17 12:31:14 | 473440 |

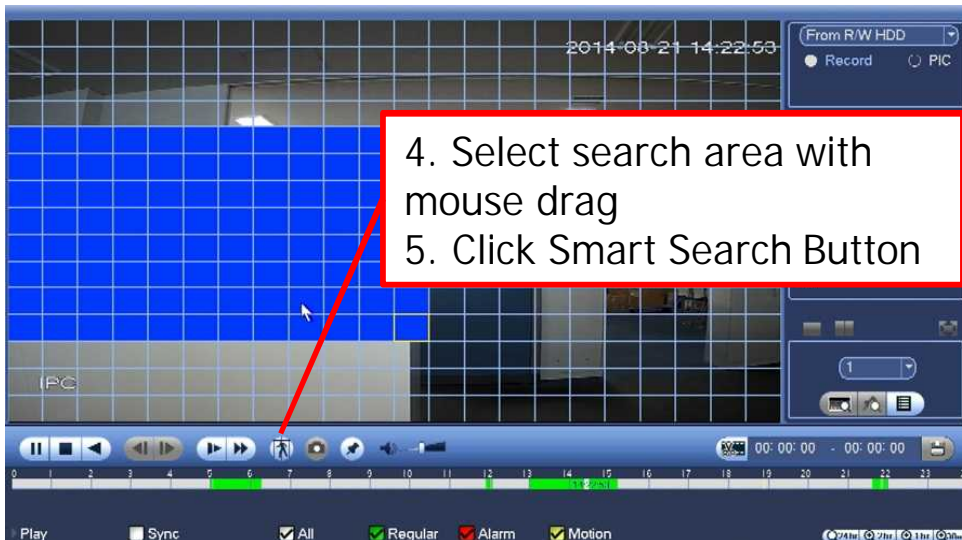
1. Preparation : Go to SETTING > EVENT > DETECT > Motion Detect



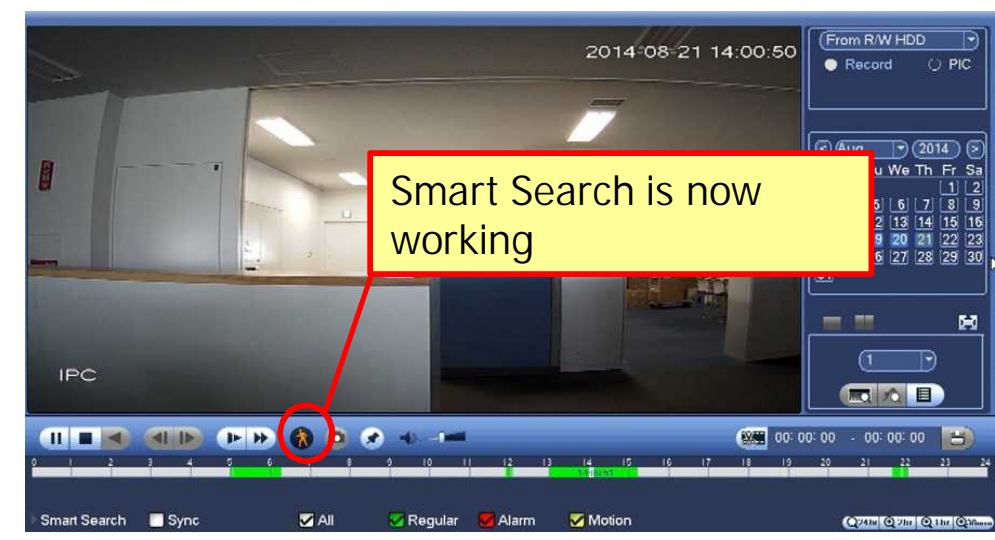
2. Check Enable



3. Click Smart Search button



4. Select search area with mouse drag
5. Click Smart Search Button



Smart Search is now working

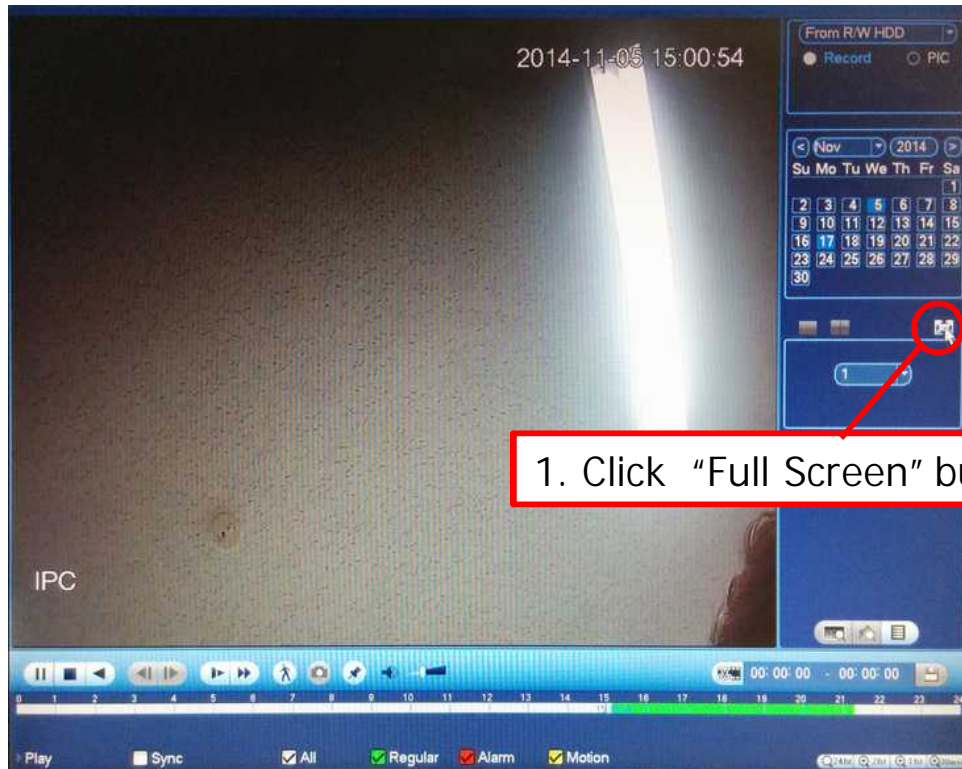
Backup - Snap Shot

Precondition

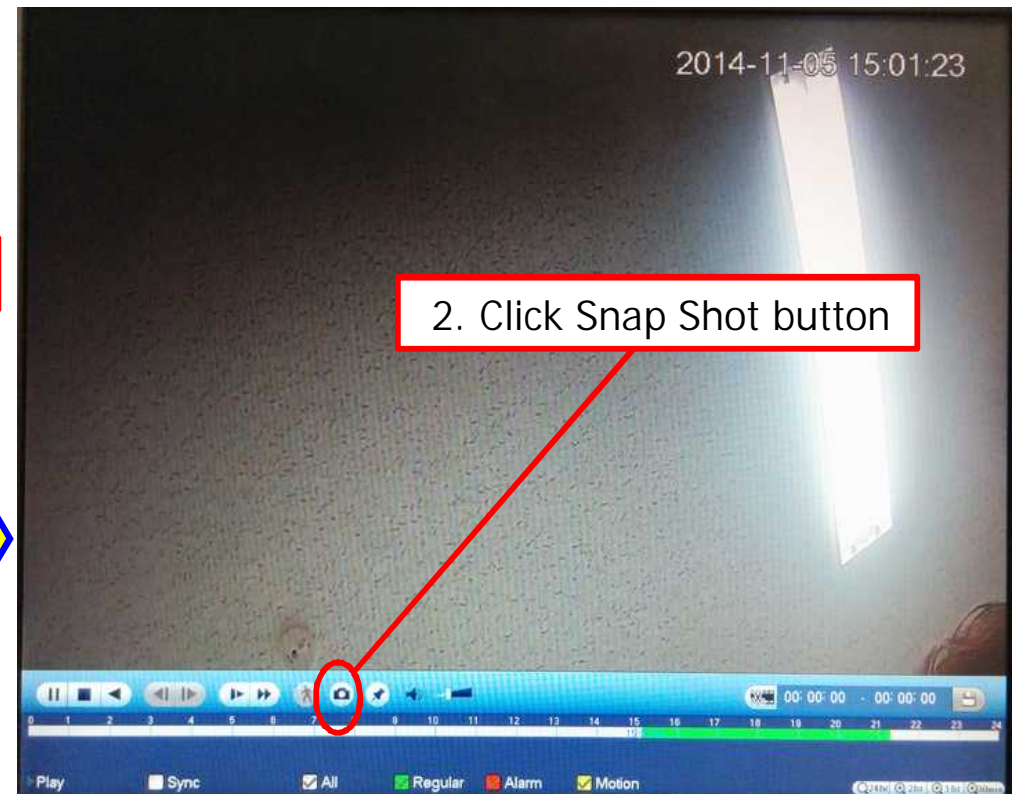
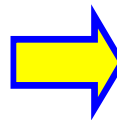
Insert USB memory to USB port on NVR

[CAUTION]

USB memory need to be formatted as FAT32



1. Click "Full Screen" button



2. Click Snap Shot button

[NOTE]

Snapshot is saved in USB memory .

Screen shot image is saved as JPEG file.

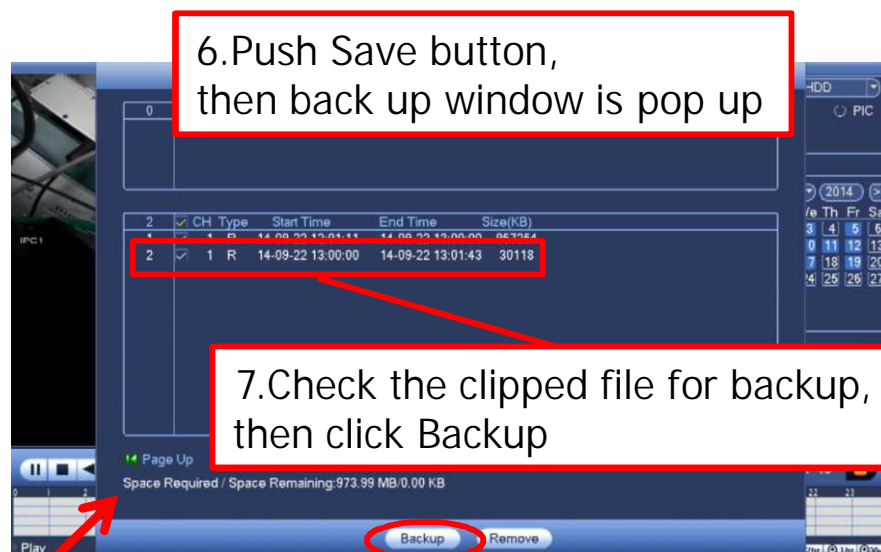
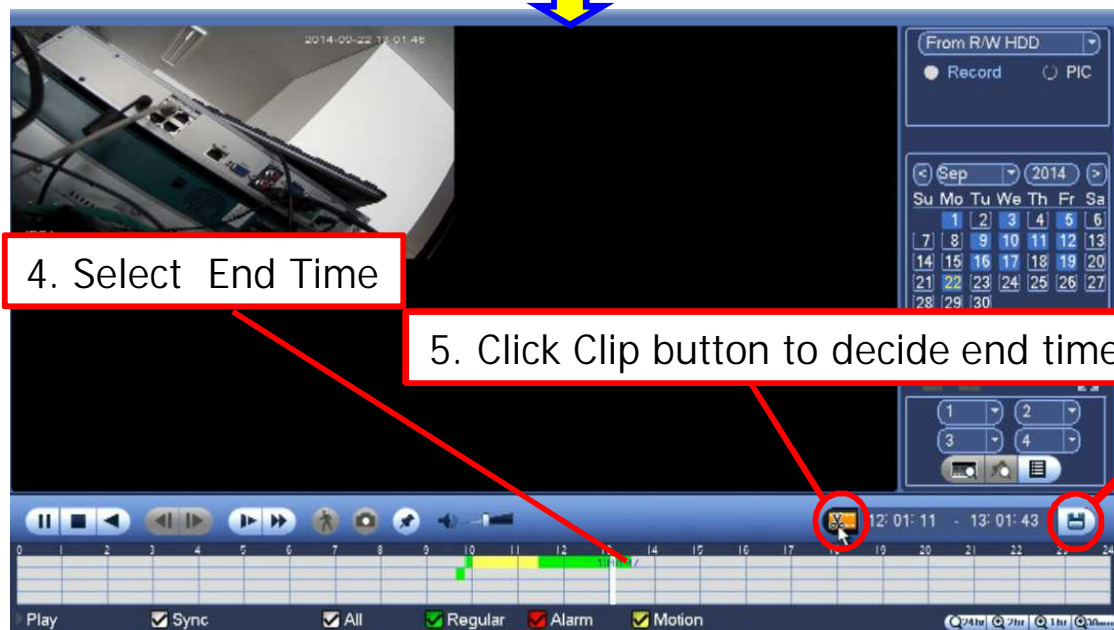
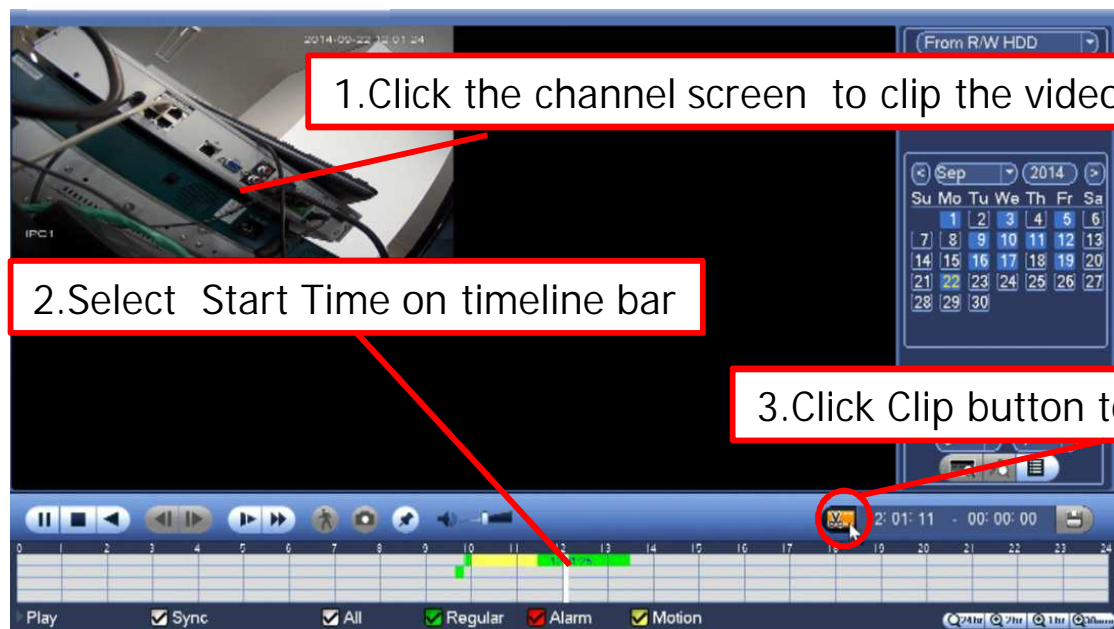
Backup - Video Clipping

Precondition

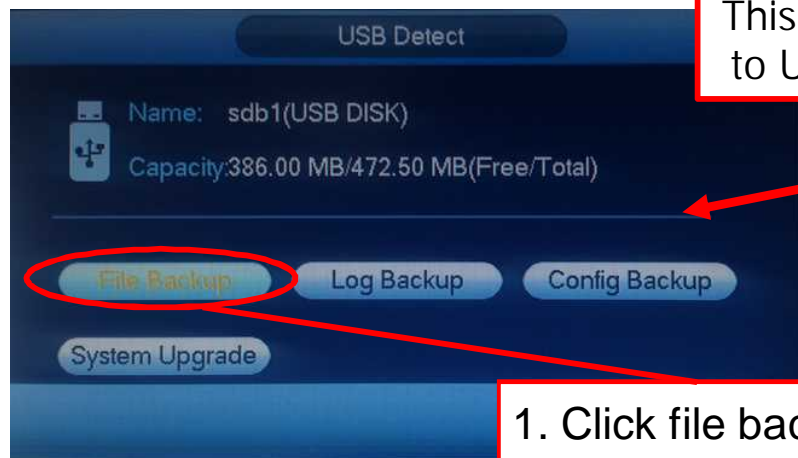
Insert USB memory to USB port on NVR

[CAUTION]

USB memory need to be formatted as FAT32

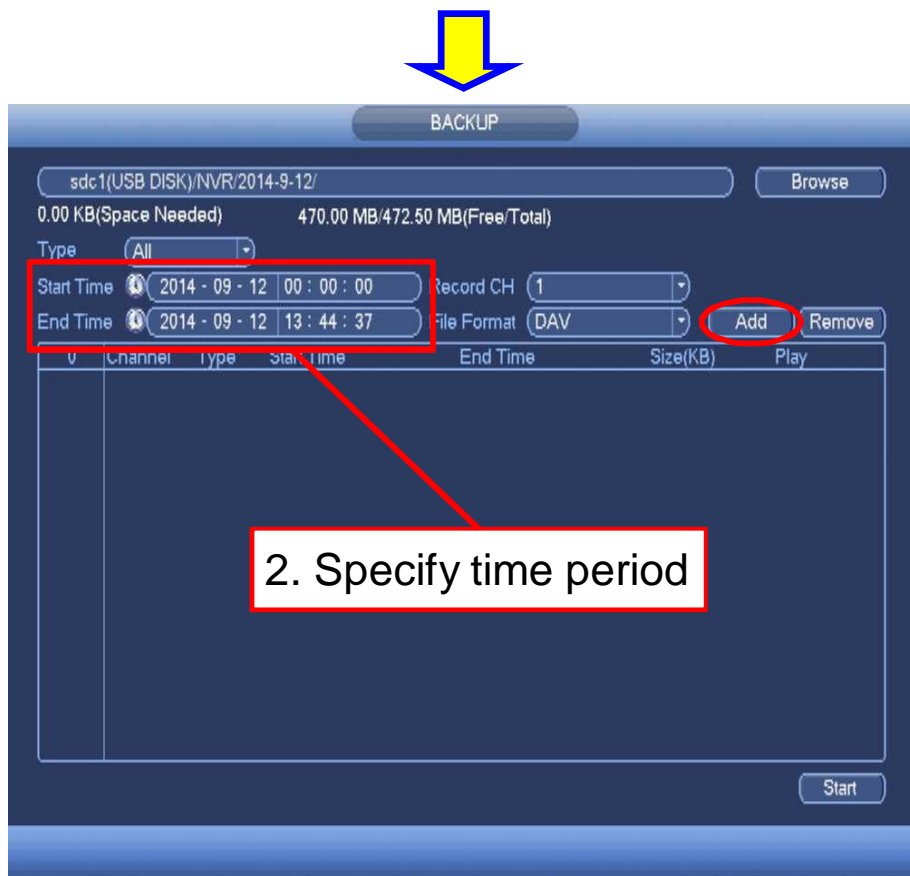


Backup - File Backup

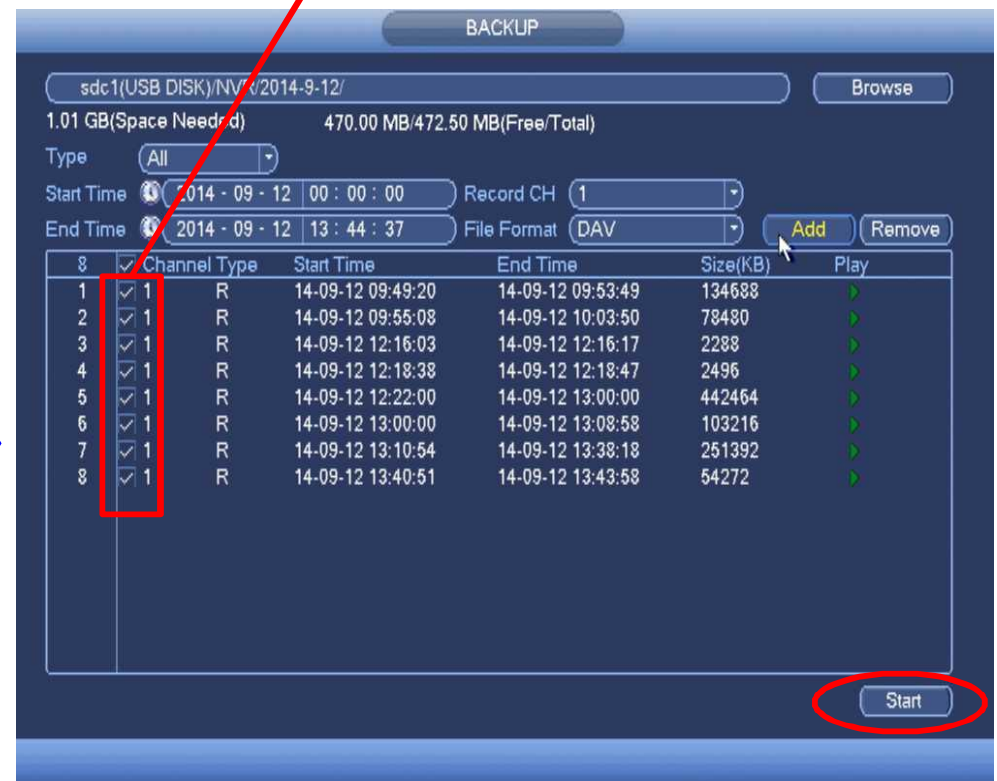


This window pop up after insertion of USB memory to USB port on NVR

1. Click file backup



2. Specify time period



3. Check files to backup

Panasonic